

**DETAILED ESTIMATE**

**RAJRATNA CASHEW NUT  
PROCESSING PLANT**

**WARE HOUSE BLOCK**

**NAME OF WORK**

**CONSTRUCTION OF WARE HOUSE BLOCK FOR RAJRATNA  
CASHEW NUT PROCESSING PLANT AT RAJAPUR DIST  
RATNAGIRI**

**NAME OF WORK :-CONSTRUCTION OF WARE HOUSE UNIT FOR  
RAJRATNA CASHEW NUT PROCESSING PLANT AT RAJAPUR DIST RATNAGIRI**

**RECAPULATION SHEET**

Sr. No.	Description Of Item	Area	Unit	Amount Rs
S W -1	Ware House Area	164	Sq. Mtr	1437879
S W - 2	Ware House Area Electrical Work			99810
S W -3	Material lab testing charges			10456
S W -4	Royalty Charges	34.90	Cu. Mtr.	8284
	<b>Total</b>			<b>1556429</b>

	Add 18% GST			280157
	Add 0.50 % Labour Insurance			77821
	<b>Grand Total For Ware House Block</b>			<b>1914408</b>



**NAME OF WORK :-CONSTRUCTION OF WARE HOUSE UNIT FOR  
RAJRATNA CASHEW NUT PROCESSING PLANT AT RAJAPUR DIST RATNAGIRI**

**MEASUREMENT SHEET**

Sr. No.	Description Of Item	No.	L (Mtr)	B (Mtr)	D (Mtr)	Qty	Unit
<b>PART-A</b>	<b>CIVIL WORK</b>			<b>P</b>			
1	Excavation for foundation in earth, soil of all types, sand, gravel and soft murum, including removing the excavated material up to a distance of 50 m. beyond the building area & stacking and spreading as directed, dewatering, preparing the bed for the foundation and necessary back filling, ramming, watering including shoring and strutting etc. complete. (Lift upto 1.5 m.) By Mechanical Means  S.S.R. OF 2022-23 ITEM NO 21.02 Page No. 153						
	FOR PLINTH FOUNDATION (WARE HOUSE)	2	17.5	1	1	35	
		1	9.5	1	1	9.5	
						<b>44.50</b>	<b>Cu Mtr.</b>
2	Excavation for foundation in hard murum including removing the excavated material upto distance of 50 metres beyond the building area and stacking and spreading as directed, dewatering, preparing the bed for the foundation and necessary back filling, ramming, watering including shoring and strutting etc. complete. (Lift upto 1.50 m) By Mechanical Means  S.S.R. OF 2022-23 ITEM NO 21.02 Page No. 153						
	EXCAVATION FOR FOUNDATION WALL (WARE HOUSE)	2	17.5	0.5	1	17.5	
		1	9.5	0.5	1	4.75	
						<b>22.25</b>	<b>Cu Mtr.</b>
3	Providing dry/ trap/ granite/ quartzite/ gneiss rubble stone soling 15 cm to 20 cm thick including hand packing and compacting etc. complete  S.S.R. OF 2022-23 ITEM NO 21.38 Page No. 157						
	SOILING BELOW FOUNDATION WALL (WARE HOUSE)	2	17.5	0.5	0.1	1.75	
		1	9.5	0.5	0.1	0.475	
						<b>2.23</b>	<b>Cu Mtr.</b>
4	Providing and laying Cast in situ/Ready Mix cement concrete in M-10 of trap/ granite/ quartzite/ gneiss metal for foundation and bedding including bailing out water, Steel centering, formwork, laying/pumping, compacting, roughening them if special finish is to be provided, finishing if required and curing complete, with fully automatic micro processor based PLC with SCADA enabled reversible Drum Type mixer/concrete Batch mix plant (Pan mixer) etc. complete. With fine aggregate (Crushed sand VSI Grade)  S.S.R. OF 2022-23 ITEM NO 24.01 Page No. 175						
	PCC FOR FOUNDATION WALL (WARE HOUSE)	2	17.5	0.5	0.1	1.75	
		1	9.5	0.5	0.1	0.475	
						<b>2.23</b>	<b>Cu Mtr.</b>



5	Providing uncoursed rubble masonry of trap / granite / quartzite / gneiss stones in cement mortar 1:6 in foundation and plinth of inner walls / in plinth of external walls including bailing out water manually , striking joints on un exposed faces and watering etc.complete. S.S.R. OF 2022-23 ITEM NO 28.01 Page No. 199						
	WALL UPTO PLINTH TRUSS BOTTOM (WARE HOUSE)	2	17.5	0.3	1.17	12.285	
		1	9.5	0.3	1.17	3.3345	
						<b>15.62</b>	<b>Cu Mtr.</b>

6	Providing second class Burnt Brick masonry with conventional/ I.S. type bricks in cement mortar 1:6 in superstructure including striking joints, raking out joints, watering and scaffolding etc. Complete S.S.R. OF 2022-23 ITEM NO 27.05 Page No. 199						
	FOUNDATION WALL UPTO PLINTH (WARE HOUSE)	2	17.5	0.23	3.5	28.175	
		1	9.5	0.23	3.5	7.6475	
						<b>35.82</b>	<b>Cu Mtr.</b>

7	Providing and laying Cast in situ/Ready Mix cement concrete in M-10 of trap/ granite/ quartzite/ gneiss metal for foundation and bedding including bailing out water, Steel centering, formwork, laying/pumping, compacting, roughening them if special finish is to be provided, finishing if required and curing complete, with fully automatic micro processor based PLC with SCADA enabled reversible Drum Type mixer/concrete Batch mix plant (Pan mixer) etc. complete. With fine aggregate (Crushed sand VSI Grade) S.S.R. OF 2022-23 ITEM NO 24.01 Page No. 175						
	PCC ON WALL TOP (WARE HOUSE)	2	17.5	0.3	0.15	1.575	
		1	9.5	0.5	0.15	0.7125	
						<b>2.29</b>	<b>Cu Mtr.</b>

8	Providing and laying Cast in situ/Ready Mix cement concrete in M-25 of trap/ granite/ quartzite/ gneiss metal for R.C.C. beams and lintels as per detailed designs and drawings or as directed including steel centering, formwork, cover blocks, laying/pumping, compaction and roughening the surface if special finish is to be provided and curing etc. complete. (Excluding reinforcement and structural steel).with fully automatic micro processor based PLC with SCADA enabled reversible Drum Type mixer/ concrete Batch mix plant (Pan mixer) etc. complete. With fine aggregate (Crushed sand VSI Grade) S.S.R. OF 2022-23 ITEM NO 25.52 Page No. 181						
	RCC LINTEL ON DOOR / WINDOW (WARE HOUSE)						
	2400 Width Roofing Shutter	1	2.8	0.23	0.3	0.1932	
	1500 Width Door	2	1.9	0.23	0.3	0.2622	
	1200 Width Window	7	1.6	0.23	0.3	0.7728	
						<b>1.23</b>	<b>Cu Mtr.</b>

9	Providing soling using 80mm. size trap metal in 15cm. layer including filling voids with crused sand/grit, ramming, watering etc. complete. Spec. no. As directed by Engineer in charge . S.S.R. OF 2022-23 ITEM NO 21.40 Page No. 157						
---	---	--	--	--	--	--	--



	SOILING BELOW FLOOR (WARE HOUSE)	1	16.88	9	0.1	15.19	Cu Mtr.
10	Providing and laying Cast in situ/Ready Mix cement concrete in M-10 of trap/ granite/ quartzite/ gneiss metal for foundation and bedding including bailing out water, Steel centering, formwork, laying/pumping, compacting, roughening them if special finish is to be provided, finishing if required and curing complete, with fully automatic micro processor based PLC with SCADA enabled reversible Drum Type mixer/concrete Batch mix plant (Pan mixer) etc. complete. With fine aggregate (Crushed sand VSI Grade) S.S.R. OF 2022-23 ITEM NO 24.01 Page No. 175						
	PCC BELOW FLOOR (WARE HOUSE)	1	16.88	9	0.1	15.19	Cu Mtr.
11	Providing and laying cement concrete flooring 40 mm thick with M20 cement concrete laid to proper level and slope in alternate bays including compaction, filling joints, marking lines to give the appearance of tiles of 30 cm x 30 cm or other size laid diagonally/ square etc finishing smooth (with extra cement) in any colour as directed and curing etc. complete. With Crushed Sand. S.S.R. OF 2022-23 ITEM NO 33.11 Page No. 214						
	IPS ON FLOOR (WARE HOUSE)	1	16.88	9	0.1	15.19	Cu Mtr.
12	Providing internal cement plaster 12mm thick in single coat in cement mortar 1:5 without neeru finish to concrete or brick surfaces, in all positions including scaffolding and curing etc. complete. S.S.R. OF 2022-23 ITEM NO 32.03 Page No. 209						
	INTERNAL WALL (WARE HOUSE)						
		2	16.88	3.7		124.912	
		2	9	3.7		66.6	
						191.51	Sq. Mtr.
13	Providing and applying plastic emulsion paint of approved quality, colour and shade to old and new surfaces in two coats including scaffolding, preparing the surface. (excluding the primer coat)etc. complete. S.S.R. OF 2022-23 ITEM NO 36.12 Page No. 227						
	INTERNAL WALL (WARE HOUSE)						
		2	16.85	3.7		124.69	
		2	9	3.7		66.6	
						191.29	Sq. Mtr.
14	Providing and fixing 6.00 mm thick ISI mark Asbestos Cement Corrugated sheet roofing including galvanised iron 'J' or 'L' hook bolts galvanised iron band bituminous G.I. washers, galvanised iron clamps, bolts, nuts and scaffolding etc. complete. S.S.R. OF 2022-23 ITEM NO 38.06 Page No. 233						
	(WARE HOUSE)						
		2	5.25	17.3		181.65	
						181.65	Sq. Mtr.



15	<p>Providing, fabricating and erecting at site of work the tubular steel structure (shed) as per standard design and specifications having various spans in between trusses and in multiples of standard length of bays as specified as per standard specifications, inclusive of cost of steel tubular trusses, tubular columns purlins, tie runners, foundation bolts, base plates, nuts and bolts, welding wherever required etc. as per detailed drawing inclusive of one coat of anticorrosive paint and two coats of oil painting of approved quality and shade etc. complete. Spec. One Number : As directed by Engineer-in-charge.</p> <p>S.S.R. OF 2022-23 ITEM NO 23.07 Page No. 174</p>						
	(WARE HOUSE)						
		1	2.53			2.53	Ton
16	<p>Providing and fixing in position aluminium openable window of any size as per detailed Windows drawing and as directed by Engineerincharge with all necessary alluminium sections including necessary fixtures and fastening with 5 mm thick clear float glass etc. complete (Colour anodized)</p> <p>S.S.R. OF 2022-23 ITEM NO 39.51 (a) Page No. 256</p>						
	(WARE HOUSE)						
		6	1.2	1		7.2	Sq. Mtr.
17	<p>Providing and fixing fiber glass reinforced polyster door shutter 35 mm thick as per IS 14856 (2000) (Reaffirmed 2006) without ventilator including chromium plated fixtures and fastening with chromium plated handles on both sides, etc complete.</p> <p>S.S.R. OF 2022-23 ITEM NO 39.63 Page No. 258</p>						
	(WARE HOUSE)						
		2	1.5	2.1		6.3	Sq. Mtr.
18	<p>Providing and fixing rolling shutter fabricated from steel laths of minimum thickness 0.9 mm with lock plate of 3.15 mm thickness reinforced with 35 x 35 x 5 mm angle section fitted with sliding bolts and handles for both sides, deep M.S. channel section of depth and thickness not less than 65 mm and 3.15 mm respectively with hold fast arrangements, M.S. Bracket plate 300 x 300 x 3.15 mm minimum size and shape with square bar, suspension shaft of minimum 32 mm diameter, hood cover of M.S. sheet not less than 0.9 mm thickness and of any size at top and safety devices including mechanical gear operation arrangement consisting of worm gear wheels and worms of high grade cast iron or mild steel and one coat of red lead primer etc. complete. (I.S. 62481979) (Without mechanical gear).</p> <p>S.S.R. OF 2022-23 ITEM NO 39.24 Page No. 248</p>						
	(WARE HOUSE)	1	2.4	2.4		5.76	
		1	1.5	2.4		3.6	
						9.36	Sq. Mtr.



19	Providing preconstructional antitermite treatment as per I.S.6313(Part-II) by treating the top surface of plinth filling at the rate of 5 litres of emulsion concentrate at 1.0 percent of clorophyrifos per square metre of surface area covering ten years guarantee on bond pap S.S.R. OF 2022-23 ITEM NO 21.24 Page No. 156						
	(WARE HOUSE)						
		1	16.88	9		151.92	Sq. Mtr.
20	Compacting the sub grade/gravel/oversize metal (200 mm loose) layers for all width with Vibratory roller having weight 8 to 10 MT. including necessary, labour, materials and artificial watering complete S.S.R. OF 2022-23 ITEM NO 50.60 Page No. 346						
	(WARE HOUSE)						
		1	16.88	9		151.92	Sq. Mtr.
21	Compacting the hard murum side widths including laying in layers on each side with vibratory roller including artificial watering etc. complete S.S.R. OF 2022-23 ITEM NO 2.31 Page No. 25						
	(WARE HOUSE)						
		1	16.88	9		151.92	Sq. Mtr.
22	Royalty for Sand					34.90	Cu Mtr.



**NAME OF WORK :-CONSTRUCTION OF WARE HOUSE UNIT FOR  
RAJRATNA CASHEW NUT PROCESSING PLANT AT RAJAPUR DIST RATNAGIRI**

**ABSTRACT SHEET - 1**

Sr. No.	Description Of Item	QUANTITY	UNIT	UNIT RATE	TOTAL AMPUNT
1	Excavation for foundation in earth, soil of all types, sand,gravel and soft murum, including removing the excavatedmaterial up to a distance of 50 m. beyond the building area & stacking and spreading as directed, dewatering, preparing the bed for the foundation and necessary back filling, ramming, watering including shoring and strutting etc. complete. (Lift upto 1.5 m.) By Mechanical Means  S.S.R. OF 2022-23 ITEM NO 21.02 Page No. 153				
	RATE ANALYSIS (WARE HOUSE)	44.50	Cu. Mtr.	207	9211.5
2	Excavation for foundation in hard murum including removing the excavated material upto distance of 50 metres beyond the building area and stacking and spreading as directed, dewatering, preparing the bed for the foundation and necessary back filling, ramming, watering including shoring and strutting etc. complete. (Lift upto 1.50 m) By Mechanical Means  S.S.R. OF 2022-23 ITEM NO 21.02 Page No. 153				
	RATE ANALYSIS (WARE HOUSE)	22.25	Cu. Mtr.	227	5050.75
3	Providing dry/ trap/ granite/ quartzite/ gneiss rubble stone soling 15 cm to 20 cm thick including hand packing and compacting etc. complete  S.S.R. OF 2022-23 ITEM NO 21.38 Page No. 157				
	SOILING BELOW FOUNDATION WALL (WARE HOUSE)	2.23	Cu. Mtr.	1382	3074.95
4	Providing and laying Cast in situ/Ready Mix cement concrete in M-10 of trap/ granite/ quartzite/ gneiss metal for foundation and bedding including bailing out water, Steel centering, formwork, laying/pumping, compacting, roughening them if special finish is to be provided, finishing if required and curing complete, with fully automatic micro processor based PLC with SCADA enabled reversible Drum Type mixer/concrete Batch mix plant (Pan mixer) etc. complete. With fine aggregate (Crushed sand VSI Grade)  S.S.R. OF 2022-23 ITEM NO 24.01 Page No. 175				
	PCC FOR FOUNDATION WALL (WARE HOUSE)	2.23	Cu. Mtr.	5830	12971.75
5	Providing uncoursed rubble masonry of trap / granite / quartzite / gneiss stones in cement mortar 1:6 in foundation and plinth of inner walls / in plinth of external walls including bailing out water manually , striking joints on un exposed faces and watering etc.complete.  S.S.R. OF 2022-23 ITEM NO 28.01 Page No. 199				
	WALL UPTO PLINTH TRUSS BOTTOM (WARE HOUSE)	15.62	Cu. Mtr.	5025	78487.9875



6	Providing second class Burnt Brick masonry with conventional/ I.S. type bricks in cement mortar 1:6 in superstructure including striking joints, raking out joints, watering and scaffolding etc. Complete S.S.R. OF 2022-23 ITEM NO 27.05 Page No. 199				
	FOUNDATION WALL UPTO PLINTH (WARE HOUSE)	35.82	Cu. Mtr.	7994	286365.065
7	Providing and laying Cast in situ/Ready Mix cement concrete in M-10 of trap/ granite/ quartzite/ gneiss metal for foundation and bedding including bailing out water, Steel centering, formwork, laying/pumping, compacting, roughening them if special finish is to be provided, finishing if required and curing complete, with fully automatic micro processor based PLC with SCADA enabled reversible Drum Type mixer/concrete Batch mix plant (Pan mixer) etc. complete. With fine aggregate (Crushed sand VSI Grade) S.S.R. OF 2022-23 ITEM NO 24.01 Page No. 175				
	PCC ON WALL TOP (WARE HOUSE)	2.29	Cu. Mtr.	5830	13336.125
8	Providing and laying Cast in situ/Ready Mix cement concrete in M-25 of trap/ granite/ quartzite/ gneiss metal for R.C.C. beams and lintels as per detailed designs and drawings or as directed including steel centering, formwork, cover blocks, laying/pumping, compaction and roughening the surface if special finish is to be provided and curing etc. complete. (Excluding reinforcement and structural steel).with fully automatic micro processor based PLC with SCADA enabled reversible Drum Type mixer/ concrete Batch mix plant (Pan mixer) etc. complete. With fine aggregate (Crushed sand VSI Grade) S.S.R. OF 2022-23 ITEM NO 25.52 Page No. 181				
	RCC LINTEL ON DOOR / WINDOW (WARE HOUSE)	1.23	Cu. Mtr.	12452	15293.55
9	Providing soling using 80mm. size trap metal in 15cm. layer including filling voids with crused sand/grit, ramming, watering etc. complete. Spec. no. As directed by Engineer in charge . S.S.R. OF 2022-23 ITEM NO 21.40 Page No. 157				
	SOILING BELOW FLOOR (WARE HOUSE)	15.19	Cu. Mtr.	1454	22089.17
10	Providing and laying Cast in situ/Ready Mix cement concrete in M-10 of trap/ granite/ quartzite/ gneiss metal for foundation and bedding including bailing out water, Steel centering, formwork, laying/pumping, compacting, roughening them if special finish is to be provided, finishing if required and curing complete, with fully automatic micro processor based PLC with SCADA enabled reversible Drum Type mixer/concrete Batch mix plant (Pan mixer) etc. complete. With fine aggregate (Crushed sand VSI Grade) S.S.R. OF 2022-23 ITEM NO 24.01 Page No. 175				
	SOILING BELOW FLOOR (WARE HOUSE)	15.19	Cu. Mtr.	5830	88569.36



11	Providing and laying cement concrete flooring 40 mm thick with M20 cement concrete laid to proper level and slope in alternate bays including compaction, filling joints, marking lines to give the appearance of tiles of 30 cm x 30 cm or other size laid diagonally/ square etc finishing smooth (with extra cement) in any colour as directed and curing etc. complete. With Crushed Sand. S.S.R. OF 2022-23 ITEM NO 33.11 Page No. 214				
	SOILING BELOW FLOOR (WARE HOUSE)	15.19	Cu. Mtr.	537	8158.10
12	Providing internal cement plaster 12mm thick in single coat in cement mortar 1:5 without neeru finish to concrete or brick surfaces, in all positions including scaffolding and curing etc. complete. S.S.R. OF 2022-23 ITEM NO 32.03 Page No. 209				
	INTERNAL WALL (WARE HOUSE)	191.51	Sq. Mtr.	271	51899.75
13	Providing and applying plastic emulsion paint of approved quality, colour and shade to old and new surfaces in two coats including scaffolding, preparing the surface. (excluding the primer coat)etc. complete. S.S.R. OF 2022-23 ITEM NO 36.12 Page No. 227				
	INTERNAL WALL (WARE HOUSE)	191.29	Sq. Mtr.	80	15303.20
14	Providing and fixing 6.00 mm thick ISI mark Asbestos Cement Corrugated sheet roofing including galvanised iron 'J' or 'L' hook bolts galvanised iron band bituminous G.I. washers, galvanised iron clamps, bolts, nuts and scaffolding etc. complete. S.S.R. OF 2022-23 ITEM NO 38.06 Page No. 233				
	(WARE HOUSE)	181.65	Sq. Mtr.	442	80289.30
15	Providing, fabricating and erecting at site of work the tubular steel structure (shed) as per standard design and specifications having various spans in between trusses and in multiples of standard length of bays as specified as per standard specifications, inclusive of cost of steel tubular trusses, tubular columns purlins, tie runners, foundation bolts, base plates, nuts and bolts, welding wherever required etc. as per detailed drawing inclusive of one coat of anticorrosive paint and two coats of oil painting of approved quality and shade etc. complete. Spec. One Number : As directed by Engineer-in-charge. S.S.R. OF 2022-23 ITEM NO 23.07 Page No. 174				
	(WARE HOUSE)	2.53	Ton	114831	290522.43
16	Providing and fixing in position aluminium openable window of any size as per detailed Windows drawing and as directed by Engineerincharge with all necessary alluminium sections including necessary fixtures and fastening with 5 mm thick clear float glass etc. complete (Colour anodized) S.S.R. OF 2022-23 ITEM NO 39.51 (a) Page No. 256				



	(WARE HOUSE)	7.2	Sq. Mtr.	5700	41040.00
17	Providing and fixing fiber glass reinforced polyster door shutter 35 mm thick as per IS 14856 (2000) (Reaffirmed 2006) without ventilator including chromium plated fixtures and fastening with chromium plated handles on both sides, etc complete. S.S.R. OF 2022-23 ITEM NO 39.63 Page No. 258				
	(WARE HOUSE)	6.3	Sq. Mtr.	5700	35910.00
18	Providing and fixing rolling shutter fabricated from steel laths of minimum thickness 0.9 mm with lock plate of 3.15 mm thickness reinforced with 35 x 35 x 5 mm angle section fitted with sliding bolts and handles for both sides, deep M.S. channel section of depth and thickness not less than 65 mm and 3.15 mm respectively with hold fast arrangements, M.S. Bracket plate 300 x 300 x 3.15 mm minimum size and shape with square bar, suspension shaft of minimum 32 mm diameter, hood cover of M.S. sheet not less than 0.9 mm thickness and of any size at top and safety devices including mechanical gear operation arrangement consisting of worm gear wheels and worms of high grade cast iron or mild steel and one coat of red lead primer etc. complete. (I.S. 62481979) (Without mechanical gear). S.S.R. OF 2022-23 ITEM NO 39.24 Page No. 248				
	(WARE HOUSE)	5.76	Sq. Mtr.	4829	27815.04
19	Providing preconstructional antitermite treatment as per I.S.6313(Part-II) by treating the top surface of plinth filling at the rate of 5 litres of emulsion concentrate at 1.0 percent of clorophyrifos per square metre of surface area covering ten years guarantee on bond pap S.S.R. OF 2022-23 ITEM NO 21.24 Page No. 156				
	(WARE HOUSE)	151.92	Sq. Mtr.	108	16407.36
20	Compacting the sub grade/gravel/oversize metal (200 mm loose) layers for all width with Vibratory roller having weight 8 to 10 MT. including necessary, labour, materials and artificial watering complete S.S.R. OF 2022-23 ITEM NO 50.60 Page No. 346				
	(WARE HOUSE)	151.92	Sq. Mtr.	37	5621.04
21	Compacting the hard murum side widths including laying in layers on each side with vibratory roller including artificial watering etc. complete S.S.R. OF 2022-23 ITEM NO 2.31 Page No. 25				
	(WARE HOUSE)	151.92	Sq. Mtr.	21	3190.32
<b>GRAND TOTAL (Ware House)</b>					<b>1110607</b>



**NAME OF WORK :-CONSTRUCTION OF WARE HOUSE UNIT FOR  
RAJRATNA CASHEW NUT PROCESSING PLANT AT RAJAPUR DIST RATNAGIRI**

**ABSTRACT SHEET - 2**

Sr. No.	Description Of Item	QUANTITY	UNIT	UNIT RATE	TOTAL AMPUNT
1	Excavation for foundation in earth, soil of all types, sand,gravel and soft murum, including removing the excavatedmaterial up to a distance of 50 m. beyond the building area & stacking and spreading as directed, dewatering, preparing the bed for the foundation and necessary back filling, ramming, watering including shoring and strutting etc. complete. (Lift upto 1.5 m.) By Mechanical Means  S.S.R. OF 2022-23 ITEM NO 21.02 Page No. 153				
	RATE ANALYSIS (WARE HOUSE)	44.50	Cu. Mtr.	116	5162
2	Excavation for foundation in hard murum including removing the excavated material upto distance of 50 metres beyond the building area and stacking and spreading as directed, dewatering, preparing the bed for the foundation and necessary back filling, ramming, watering including shoring and strutting etc. complete. (Lift upto 1.50 m) By Mechanical Means  S.S.R. OF 2022-23 ITEM NO 21.02 Page No. 153				
	RATE ANALYSIS (WARE HOUSE)	22.25	Cu. Mtr.	127	2825.75
3	Providing dry/ trap/ granite/ quartzite/ gneiss rubble stone soling 15 cm to 20 cm thick including hand packing and compacting etc. complete  S.S.R. OF 2022-23 ITEM NO 21.38 Page No. 157				
	SOILING BELOW FOUNDATION WALL (WARE HOUSE)	2.23	Cu. Mtr.	432	961.2
4	Providing and laying Cast in situ/Ready Mix cement concrete in M-10 of trap/ granite/ quartzite/ gneiss metal for foundation and bedding including bailing out water, Steel centering, formwork, laying/pumping, compacting, roughening them if special finish is to be provided, finishing if required and curing complete, with fully automatic micro processor based PLC with SCADA enabled reversible Drum Type mixer/concrete Batch mix plant (Pan mixer) etc. complete. With fine aggregate (Crushed sand VSI Grade)  S.S.R. OF 2022-23 ITEM NO 24.01 Page No. 175				
	PCC FOR FOUNDATION WALL (WARE HOUSE)	2.23	Cu. Mtr.	1616	3595.6
5	Providing uncoursed rubble masonry of trap / granite / quartzite / gneiss stones in cement mortar 1:6 in foundation and plinth of inner walls / in plinth of external walls including bailing out water manually , striking joints on un exposed faces and watering etc.complete.  S.S.R. OF 2022-23 ITEM NO 28.01 Page No. 199				
	WALL UPTO PLINTH TRUSS BOTTOM (WARE HOUSE)	15.62	Cu. Mtr.	2513	39251.8035



6	Providing second class Burnt Brick masonry with conventional/ I.S. type bricks in cement mortar 1:6 in superstructure including striking joints, raking out joints, watering and scaffolding etc. Complete S.S.R. OF 2022-23 ITEM NO 27.05 Page No. 199				
	FOUNDATION WALL UPTO PLINTH (WARE HOUSE)	35.82	Cu. Mtr.	1705	61077.3625
7	Providing and laying Cast in situ/Ready Mix cement concrete in M-10 of trap/ granite/ quartzite/ gneiss metal for foundation and bedding including bailing out water, Steel centering, formwork, laying/pumping, compacting, roughening them if special finish is to be provided, finishing if required and curing complete, with fully automatic micro processor based PLC with SCADA enabled reversible Drum Type mixer/concrete Batch mix plant (Pan mixer) etc. complete. With fine aggregate (Crushed sand VSI Grade) S.S.R. OF 2022-23 ITEM NO 24.01 Page No. 175				
	PCC ON WALL TOP (WARE HOUSE)	2.29	Cu. Mtr.	1616	3696.6
8	Providing and laying Cast in situ/Ready Mix cement concrete in M-25 of trap/ granite/ quartzite/ gneiss metal for R.C.C. beams and lintels as per detailed designs and drawings or as directed including steel centering, formwork, cover blocks, laying/pumping, compaction and roughening the surface if special finish is to be provided and curing etc. complete. (Excluding reinforcement and structural steel).with fully automatic micro processor based PLC with SCADA enabled reversible Drum Type mixer/ concrete Batch mix plant (Pan mixer) etc. complete. With fine aggregate (Crushed sand VSI Grade) S.S.R. OF 2022-23 ITEM NO 25.52 Page No. 181				
	RCC LINTEL ON DOOR / WINDOW (WARE HOUSE)	1.23	Cu. Mtr.	5085	6245.40
9	Providing soling using 80mm. size trap metal in 15cm. layer including filling voids with crused sand/grit, ramming, watering etc. complete. Spec. no. As directed by Engineer in charge . S.S.R. OF 2022-23 ITEM NO 21.40 Page No. 157				
	SOILING BELOW FLOOR (WARE HOUSE)	15.19	Cu. Mtr.	436	6623.71
10	Providing and laying Cast in situ/Ready Mix cement concrete in M-10 of trap/ granite/ quartzite/ gneiss metal for foundation and bedding including bailing out water, Steel centering, formwork, laying/pumping, compacting, roughening them if special finish is to be provided, finishing if required and curing complete, with fully automatic micro processor based PLC with SCADA enabled reversible Drum Type mixer/concrete Batch mix plant (Pan mixer) etc. complete. With fine aggregate (Crushed sand VSI Grade) S.S.R. OF 2022-23 ITEM NO 24.01 Page No. 175				
	SOILING BELOW FLOOR (WARE HOUSE)	15.19	Cu. Mtr.	1616	24550.27



11	Providing and laying cement concrete flooring 40 mm thick with M20 cement concrete laid to proper level and slope in alternate bays including compaction, filling joints, marking lines to give the appearance of tiles of 30 cm x 30 cm or other size laid diagonally/ square etc finishing smooth (with extra cement) in any colour as directed and curing etc. complete. With Crushed Sand. S.S.R. OF 2022-23 ITEM NO 33.11 Page No. 214				
	SOILING BELOW FLOOR (WARE HOUSE)	15.19	Cu. Mtr.	308	4679.14
12	Providing internal cement plaster 12mm thick in single coat in cement mortar 1:5 without neeru finish to concrete or brick surfaces, in all positions including scaffolding and curing etc. complete. S.S.R. OF 2022-23 ITEM NO 32.03 Page No. 209				
	INTERNAL WALL (WARE HOUSE)	191.51	Sq. Mtr.	204	39068.45
13	Providing and applying plastic emulsion paint of approved quality, colour and shade to old and new surfaces in two coats including scaffolding, preparing the surface. (excluding the primer coat)etc. complete. S.S.R. OF 2022-23 ITEM NO 36.12 Page No. 227				
	INTERNAL WALL (WARE HOUSE)	191.29	Sq. Mtr.	24	4590.96
14	Providing and fixing 6.00 mm thick ISI mark Asbestos Cement Corrugated sheet roofing including galvanised iron 'J' or 'L' hook bolts galvanised iron band bituminous G.I. washers, galvanised iron clamps, bolts, nuts and scaffolding etc. complete. S.S.R. OF 2022-23 ITEM NO 38.06 Page No. 233				
	(WARE HOUSE)	181.65	Sq. Mtr.	197	35785.05
15	Providing, fabricating and erecting at site of work the tubular steel structure (shed) as per standard design and specifications having various spans in between trusses and in multiples of standard length of bays as specified as per standard specifications, inclusive of cost of steel tubular trusses, tubular columns purlins, tie runners, foundation bolts, base plates, nuts and bolts, welding wherever required etc. as per detailed drawing inclusive of one coat of anticorrosive paint and two coats of oil painting of approved quality and shade etc. complete. Spec. One Number : As directed by Engineer-in-charge. S.S.R. OF 2022-23 ITEM NO 23.07 Page No. 174				
	(WARE HOUSE)	2.53	Ton	22701	57433.53
16	Providing and fixing in position aluminium openable window of any size as per detailed Windows drawing and as directed by Engineerincharge with all necessary alluminium sections including necessary fixtures and fastening with 5 mm thick clear float glass etc. complete (Colour anodized) S.S.R. OF 2022-23 ITEM NO 39.51 (a) Page No. 256				



	(WARE HOUSE)	7.2	Sq. Mtr.	1809	13024.80
17	Providing and fixing fiber glass reinforced polyster door shutter 35 mm thick as per IS 14856 (2000) (Reaffirmed 2006) without ventilator including chromium plated fixtures and fastening with chromium plated handles on both sides, etc complete. S.S.R. OF 2022-23 ITEM NO 39.63 Page No. 258				
	(WARE HOUSE)	6.3	Sq. Mtr.	1809	11396.70
18	Providing and fixing rolling shutter fabricated from steel laths of minimum thickness 0.9 mm with lock plate of 3.15 mm thickness reinforced with 35 x 35 x 5 mm angle section fitted with sliding bolts and handles for both sides, deep M.S. channel section of depth and thickness not less than 65 mm and 3.15 mm respectively with hold fast arrangements, M.S. Bracket plate 300 x 300 x 3.15 mm minimum size and shape with square bar, suspension shaft of minimum 32 mm diameter, hood cover of M.S. sheet not less than 0.9 mm thickness and of any size at top and safety devices including mechanical gear operation arrangement consisting of worm gear wheels and worms of high grade cast iron or mild steel and one coat of red lead primer etc. complete. (I.S. 62481979) (Without mechanical gear). S.S.R. OF 2022-23 ITEM NO 39.24 Page No. 248				
	(WARE HOUSE)	5.76	Sq. Mtr.	846	4872.96
19	Providing preconstructional antitermite treatment as per I.S.6313(Part-II) by treating the top surface of plinth filling at the rate of 5 litres of emulsion concentrate at 1.0 percent of clorophyrifos per square metre of surface area covering ten years guarantee on bond pap S.S.R. OF 2022-23 ITEM NO 21.24 Page No. 156				
	(WARE HOUSE)	151.92	Sq. Mtr.	8	1215.36
20	Compacting the sub grade/gravel/oversize metal (200 mm loose) layers for all width with Vibratory roller having weight 8 to 10 MT. including necessary, labour, materials and artificial watering complete S.S.R. OF 2022-23 ITEM NO 50.60 Page No. 346				
	(WARE HOUSE)	151.92	Sq. Mtr.	4	607.68
21	Compacting the hard murum side widths including laying in layers on each side with vibratory roller including artificial watering etc. complete S.S.R. OF 2022-23 ITEM NO 2.31 Page No. 25				
	(WARE HOUSE)	151.92	Sq. Mtr.	4	607.68
<b>GRAND TOTAL (Ware House)</b>					<b>327272</b>
22	<b>Laboratory test of construction material</b>				
	<b>1) BASIC TEST OF AGGREGATE</b>				



a) Water Absorption, Specific Gravity, Impact Value, Crushing Value.	1 No.	2600	2600.00
b) Sieve Analysis.	1 No.	690	690.00
c) Abrasion Value	1 No.	1170	1170.00
d) Flakiness Index & Elongation Index.	1 No.	850	850.00
<b>2) BRICKS</b>			
Water Absorption (Set of 5 Bricks), Compressive Strength( Set of 5 Bricks), Efflorescence (Set of 5 Bricks).	1 No.	2175	2175.00
<b>3) CONCRETE</b>			
a) Compressive Strength OF C.C. Cube (Set of 3 cubes)	1 No.	690	690.00
b) Concrete Mix Design (With all Tests on basic materials)	1 No.	13755	13755.00
<b>4) STEEL</b>			
Steel bar testing upto 16 mm (set of 3 bars)(Tensile strength, %, Elongation, Yield Stress, Weight-Per Meter, Bend / Rebend Test, Proof Stress.	1 No.	1595	1595.00
<b>Total Rs.</b>			<b>23525.00</b>



13 ELECTRICAL WORK (Ware House Unit)							
SR. NO.	DESCRIPTION	QTY.	UNIT	UNIT RATE		TOTAL	
				SUPPLY	ERECTION	SUPPLY	ERECTION
<b>I LIGHT FIXTURE</b>							
	Supplying, Fixing & Testing of LED Square Slim Panel Light False Ceiling POP Downlight Indoor Light RECESSED Ceiling Lamp						
1.1	Recess Mounted Bottom Openable <b>22 Watt</b> Fitting Suitable for 50mm Thick False Ceiling.	0	No.	2100	315	0	0
1.2	LED Tube Light with Reflector <b>18/20 Watt</b> Fitting Suitable for Pendant type mounting Including all accessories for mounting	15	No.	840	126	12600	1890
<b>II LIGHTING WORK</b>							
<b>1 POINT WIRING</b>							
1.1	Wiring for light point/ Ceiling fan/ Bracket fan/ Exhaust fan with 2 run of 1.5 sq. mm FR PVC insulated multistranded copper conductor FRLS wires (one each for Phase, Neutral) 1 run of each of 1 sq.mm copper conductor PVC insulated multistranded copper conductor for continuous earthing in ISI make 25mm PVC conduit, PVC flexible hose on ceiling, coupler etc for various purposes as required at site and as per standards.The rate shall inclusive of necessary supports, fixing screws, etc complete.concealed in wall/ partition with necessary clamps, screws etc .						
1.1.1	1.5 sq. mm FR PVC insulated multistranded copper conductor (for Phase & Neutral)	600	Mtr.	25	4	15120	2268
1.1.2	1 sq. mm FR PVC insulated multistranded copper conductor (for earth)	300	Mtr.	14	2	4200	630
1.1.3	Supply and laying of ISI make 25mm size PVC conduits in floor / wall /ceiling etc.including necessary bends, elbow, etc, in concealed system below the false ceiling on wall/floor and open system on above false ceiling.	250	Mtr.	49	15	12250	3675



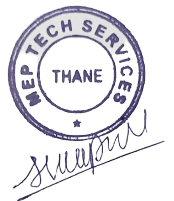
SR. NO.	DESCRIPTION	QTY.	UNIT	UNIT RATE		TOTAL	
				SUPPLY	ERECTION	SUPPLY	ERECTION
<b>2</b>	<b>SWITCH BOARD , SOCKET &amp; PLUG BOARD</b>						
2.1	Supplying & Fixing of following type of GI box along with modular base & <b>SS 304 Matt Finish</b> modular cover plate Made from high Glass high impact resistant thermoplastic cover plate for modular switches & sockets .Board box shall be made out of steel sheet of 1.20 mm thick duly pretreatment & zinc coated & passivated / powder coated to accommodate specified number of electrical accessories & suitable for indoor electrical installation with provision for earthing termination. (All Classified Area) .						
2.1.1	1 module switch box (78 x 75 x 50 mm)	0	Nos.	356	71	0	0
2.1.2	2 module switch box (78 x 75 x 50 mm)	2	Nos.	356	71	711	142
2.1.3	3 module switch box (100 x 75 x 50 mm)	2	Nos.	479	96	958	192
2.2	Supplying & Fixing following modular switches on exiting modular plate & switch box/ including connection but excluding modular plate etc. as required.						
2.2.1	6 Amps. Modular 1-way switch	10	Nos.	146	29	1456	291
<b>3</b>	<b>WIRING FROM LDB TO SWITCH BOARD</b>						
3.1	Supplying, connecting & commissioning of Wiring from LDB to switch board one circuit meter comprising of 2 run of 2.5 sq. mm FR PVC insulated multistranded copper conductor FRLS wires (one each for Phase, Neutral) 1 run of each of 1.5 sq.mm copper conductor PVC insulated multistranded copper conductor for continuous earthing in ISI make 25mm PVC conduit concealed in wall/ partion with necessary clamps, screws etc.						
3.1.1	2.5 sq. mm FR PVC insulated multistranded copper conductor (for Phase & Neutral)	300	Mtr.	36	5	10920	1638
3.1.2	1.5 sq. mm FR PVC insulated multistranded copper conductor (for earth)	150	Mtr.	25	4	3780	567
3.1.3	Supply and laying of ISI make 25mm size PVC conduits in floor / wall /ceiling etc.including necessary bends, elbow, etc, in concealed system below the false ceiling on wall/floor and open system on above false ceiling.	100	Mtr.	49	15	4900	1470

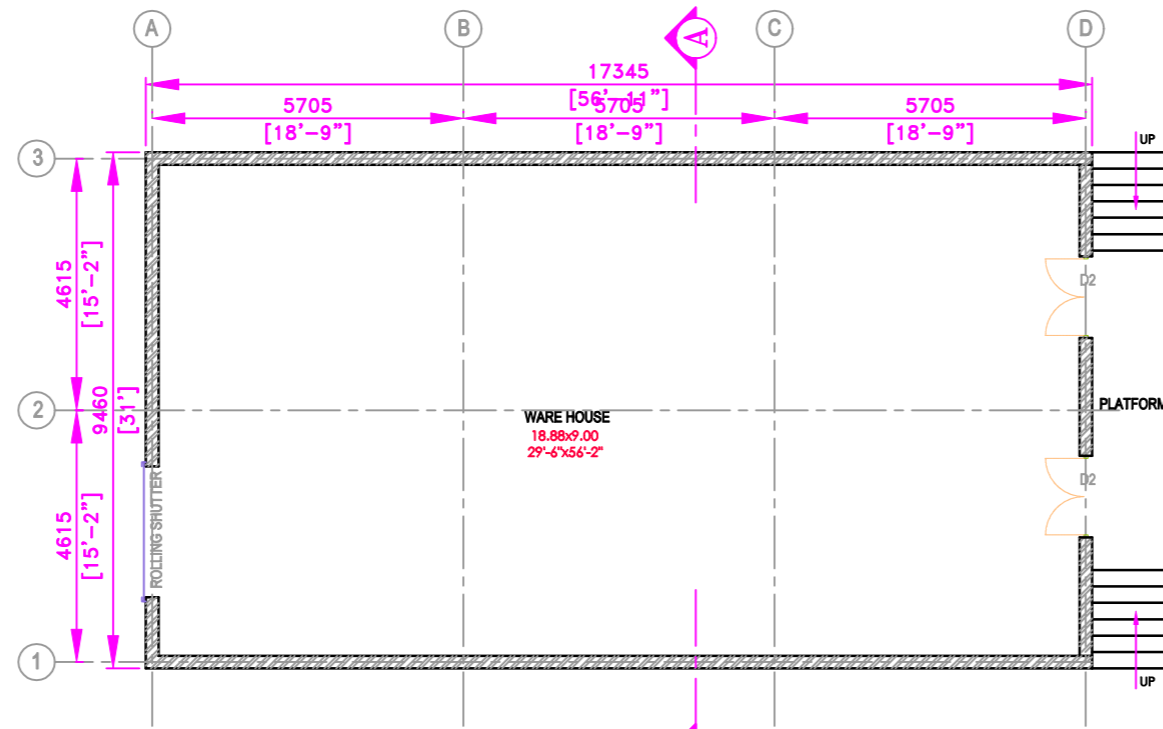


SR. NO.	DESCRIPTION	QTY.	UNIT	UNIT RATE		TOTAL	
				SUPPLY	ERECTION	SUPPLY	ERECTION
<b>III</b>	<b>POWER POINT WORK</b>						
<b>1</b>	<b>WIRING FROM PDB TO SWITCH BOARD</b>						
1.1	Wiring from PDB to Single Phase Power point 5/6 Amp.& 15/16Amp switch socket one circuit meter comprising of 2 run of 2.5 sq. mm FR PVC insulated multistranded copper conductor FRLS wires (one each for Phase, Neutral) 1 run of each of 1.5 sq.mm copper conductor PVC insulated multistranded copper conductor for continuous earthing in ISI make 25mm PVC conduit conceled in wall/ partion or laid in open fashion above false ceiling with necessary clamps, screws etc.						
1.1.1	2.5 sq. mm FR PVC insulated multistranded copper conductor (for Phase & Neutral)	200	Mtr.	36	5	7280	1092
1.1.2	1.5 sq. mm FR PVC insulated multistranded copper conductor (for Earthing)	100	Mtr.	25	4	2520	378
1.2	Wiring from PDB to Single Phase 20Amp. power point one circuit meter comprising of 2 wire of 4 sq. mm FR PVC insulated multistranded copper conductor FRLS wires (one each for Phase, Neutral) 1 run of each of 2.5 sq.mm copper conductor PVC insulated multistranded copper conductor for continuous earthing in ISI make 25mm PVC conduit conceled in wall/ partion or laid in open fashion above false ceiling with necessary clamps, screws etc.						
1.2.1	4 sq. mm FR PVC insulated multistranded copper conductor (for R-Y-B Phase & Neutral)	0	Mtr.	48	7	0	0
1.2.2	2.5 sq. mm FR PVC insulated multistranded copper conductor	0	Mtr.	36	5	0	0
1.3	Supply and laying of ISI make following size conduits in floor / wall /ceiling etc.including necessary bends, elbow, etc, in concealed system below the false ceiling on wall/floor and open system on above false ceiling.(The rate shall includes minor civil works such as floor/Wall cutting, chipping, plastering and to make good finished surface to match with the original surface.)						
1.3.1	25mm dia PVC conduit	80	Mtr.	49	15	3920	1176
1.3.2	Flexible Pipe	0	Mtr.	34	5	0	0
<b>2</b>	<b>SWITCH BOARD , SOCKET &amp; PLUG BOARD</b>						

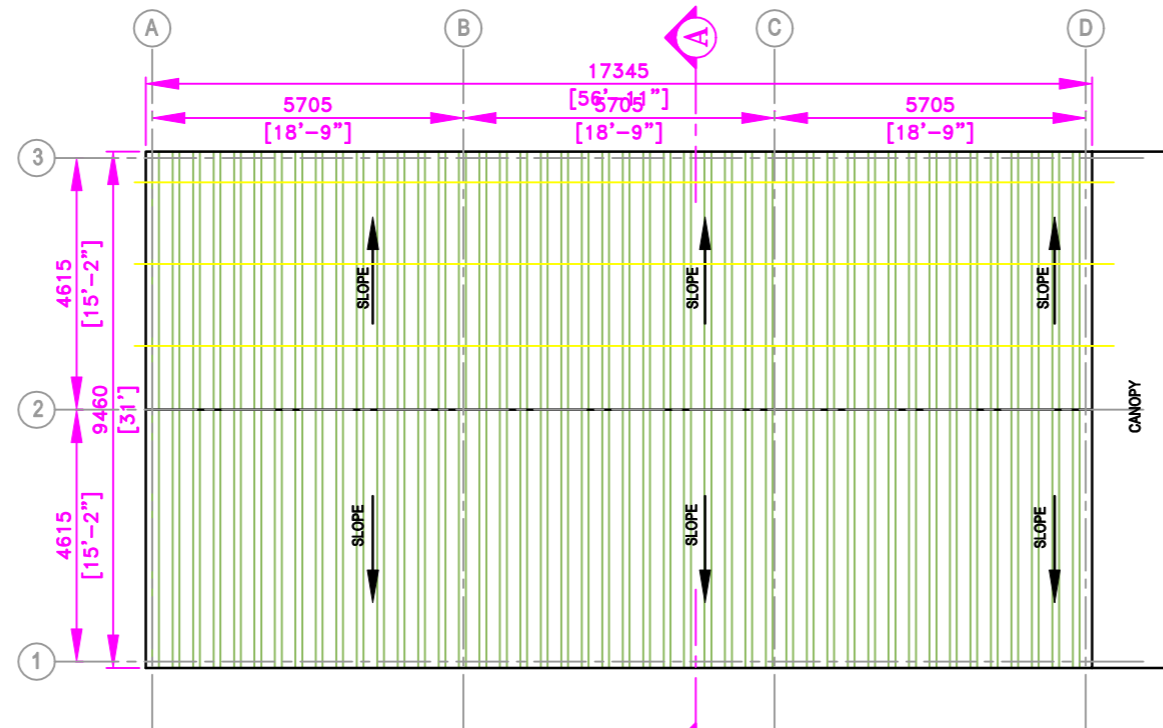


SR. NO.	DESCRIPTION	QTY.	UNIT	UNIT RATE		TOTAL	
				SUPPLY	ERECTION	SUPPLY	ERECTION
2.1	Supplying & Fixing following type of GI box along with modular base & high Gloss high impact resistant thermoplastic cover plate for modular switches & sockets .Board box shall be made out of steel sheet of 1.20 mm thick duly pretreatment & zinc coated & passivated / powder coated to accommodate specified number of electrical accessories & suitable for indoor electrical installation with provision for earthing termination.						
2.1.1	1 module switch box (78 x 75 x 50 mm)	0	Nos.	356	53	0	0
2.1.2	2 module switch box (78 x 75 x 50 mm)	0	Nos.	356	53	0	0
2.1.3	3 module switch box (100 x 75 x 50 mm)	4	Nos.	479	72	1915	287
2.1.4	4 module switch box (137 x 75 x 50 mm)	0	Nos.	524	79	0	0
2.1.5	6 module switch box (214 x 75 x 50 mm)	0	Nos.	780	117	0	0
2.1.6	8 module switch box (230 x 75 x 50 mm)	0	Nos.	888	133	0	0
2.2	Supplying & Fixing following modular switch/ socket on exiting modular plate & switch box/ including connection but excluding modular plate etc. as required.						
2.2.1	Supplying & fixing 5-16 Amps switch	4	Nos.	146	22	582	87
2.2.2	Supplying & fixing 5/6 & 15/16 Amps. (combined) 6 pin Modular socket (shutter type) 3 Module	4	Nos.	199	30	795	119
<b>TOTAL (In INR)</b>						<b>83,908</b>	<b>15,903</b>

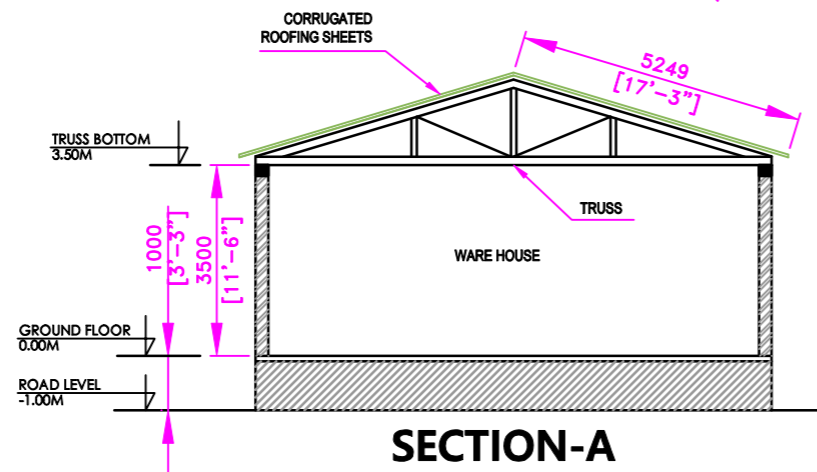




**GROUND FLOOR PLAN**



**ROOF LEVEL PLAN**



**SECTION-A**

LEGEND	DESCRIPTION
	ALUMINUM PARTITION WALL
	BRICK / BLOCK WALL

DOOR SCHEDULE		
NOMENCLATURE	SIZE (W X H)	SILL / TOP LVL.
D1	1000 X 2100	0.0 / 2.10 Mtr.
D2	1500 X 2100	0.0 / 2.10 Mtr.

WINDOW & VIEW PANEL SCHEDULE		
NOMENCLATURE	SIZE (W X H)	SILL / TOP LVL.
V	600 X 2100	1.10 / 2.10 Mtr.
W-1	1200 X 1000	1.10 / 2.10 Mtr.

REVISION HISTORY		
DESCRIPTION	NO.	DATE
PREPARED FOR REVIEW & COMMENTS	00	11.12.2022

**CLIENT : Rajratna Cashew Nut**  
**WARE HOUSE**  
 AT. RAJAPUR, DIST. RATANAGIRI

**CONSULTANTS :**  
  
*Beyond Making Everything Possible*

**DRAWING TITLE : CONCEPT PLAN**

**DRAWING STATUS :**  Information  Execution  
 Approval  Record

**DRAWING NO: MEP /CIV / 101 / 01**

**DRAWIN BY: NILESH** **REV NO.**

**CHECKED BY: SSB** **R-00**

**SHEET NO: 1 OF 1** **DATE : 11.12.2022**